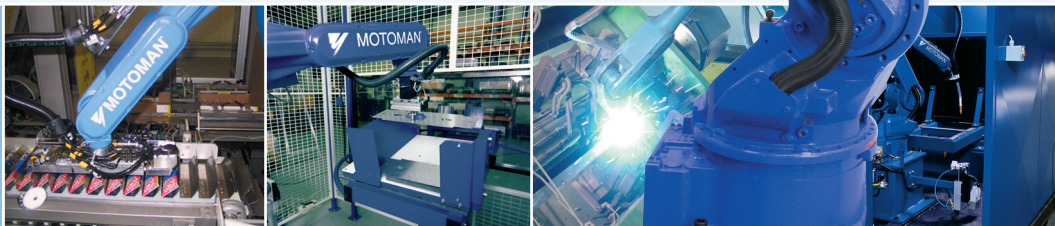
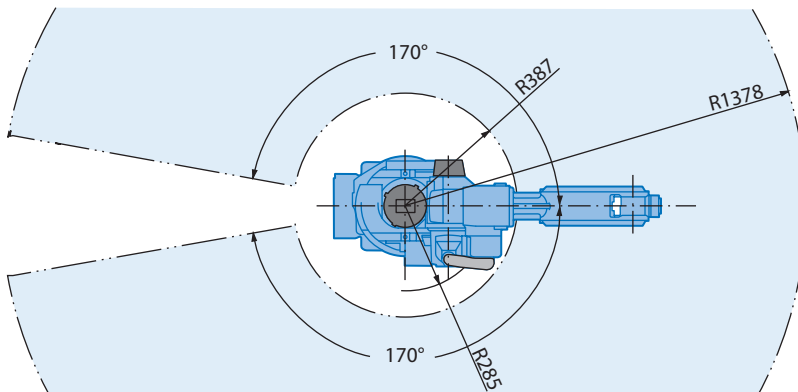
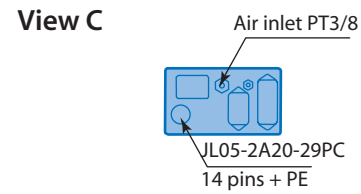
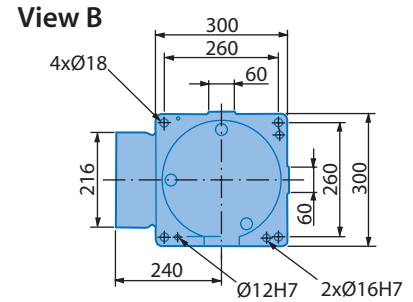
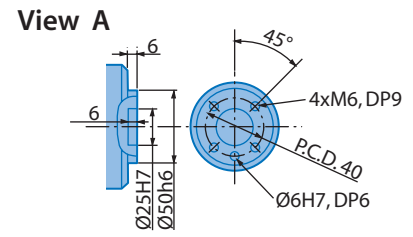
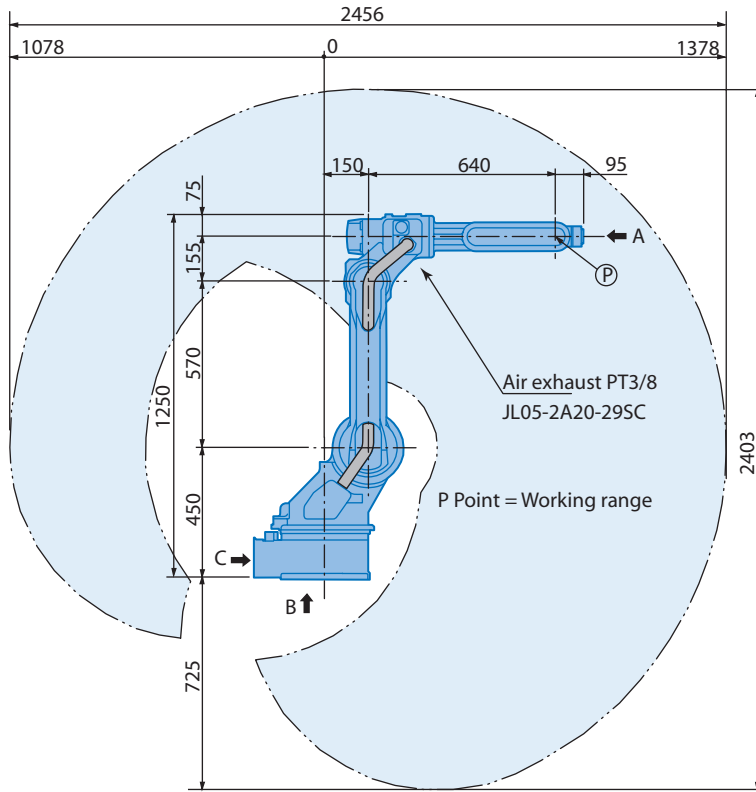


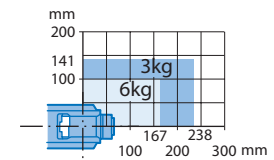
General purpose robot
MOTOMAN-SSF2000
MOTOMAN-SSF2000-10



MOTOMAN-SSF2000



Maximum payload



Note

These dimensions are for reference only. Please request detail drawings for all design or engineering requirements.

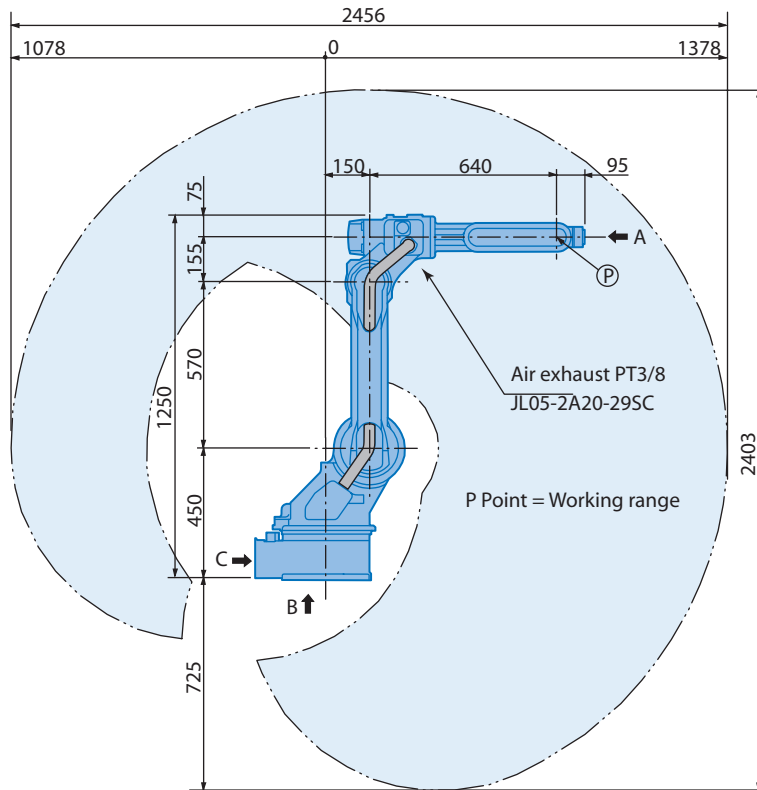
Technical Specification for MOTOMAN-SSF2000

Controlled axis	6	Axis	Motion range	Maximum speed	Allowable moment	Allowable inertia
Payload	6 kg					
Repeatability	±0.08 mm	S	±170°	210°/s	–	–
Weight	130 kg	L	+155°, -90°	190°/s	–	–
Power requirements	1.5 kVA	U	+250°, -175°	210°/s	–	–
Mounting positions	Floor, wall ¹⁾ and ceiling	R	±180°	400°/s	11.8 Nm	0.24 kg·m ²
Wrist unit protection class	N.C. ²⁾	B	+225°, -45°	400°/s	9.8 Nm	0.17 kg·m ²
Robot body protection class	N.C. ²⁾	T	±360°	600°/s	5.9 Nm	0.06 kg·m ²
Ambient conditions	0 to +45°C, 20-80% RH					

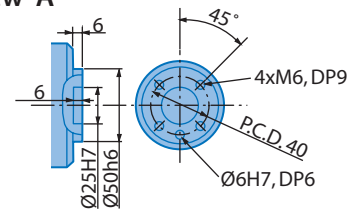
¹⁾ S-axis limitations

²⁾ Not classified for standard version. Optional IP-class pending.

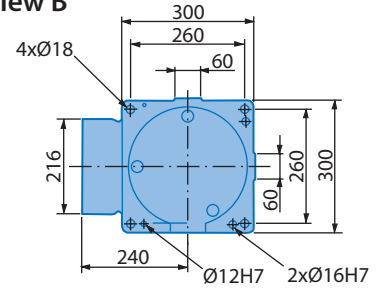
MOTOMAN-SSF2000-10



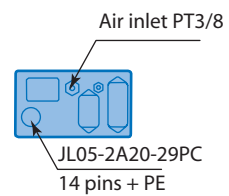
View A



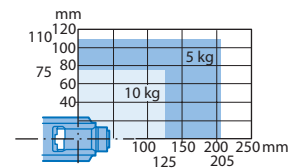
View B



View C



Maximum payload



Note

These dimensions are for reference only. Please request detail drawings for all design or engineering requirements.

Technical Specification for MOTOMAN-SSF2000-10

Controlled axis	6	Axis	Motion range	Maximum speed	Allowable moment	Allowable inertia
Payload	10 kg					
Repeatability	±0.08 mm	S	±170°	140°/s	-	-
Weight	140 kg	L	+155°, -90°	130°/s	-	-
Power requirements	1.5 kVA	U	+210°, -175°	135°/s	-	-
Mounting positions	Floor, wall ¹⁾ and ceiling	R	±180°	270°/s	12.2 Nm	0.24 kg·m ²
Wrist unit protection class	N.C. ²⁾	B	+225°, -45°	270°/s	14.2 Nm	0.21 kg·m ²
Robot body protection class	N.C. ²⁾	T	±360°	400°/s	7.3 Nm	0.06 kg·m ²
Ambient conditions	0 to +45°C, 20-80% RH					

¹⁾ S-axis limitations

²⁾ Not classified for standard version. Optional IP-class pending.

MOTOMAN offices and representatives near you

MOTOMAN Headquarters

SE MOTOMAN Robotics Europe AB
Kalmar +46-480-417800

DE MOTOMAN robotec GmbH
Allershausen +49-8166-90-0

MOTOMAN Company group

AT MOTOMAN robotec GmbH
Vienna +43-1-707 9324 15

CZ MOTOMAN robotec Czech s.r.o.
Prague +420-251-618430

DE MOTOMAN robotec GmbH
Frankfurt +49-6173-607730

DK MOTOMAN Robotics Europe AB
Løsning +45 7022 2477

ES MOTOMAN Robotics Iberica S.L.
Barcelona +34-93-6303478

FI MOTOMAN Robotics Finland Oy
Turku +358-403000600

FR MOTOMAN Robotics S.A.
Nantes +33-2-40131919

IT MOTOMAN Robotics Italia SRL
Torino +39-011-9005833

NL MOTOMAN benelux B.V.
Breda +31-76-5302305

PT MOTOMAN Robotics Iberica S.L.
Aveiro +351-234-943 900

SE MOTOMAN Robotics Europe AB
Torsås +46-480-417800

SI MOTOMAN robotec d.o.o.
Ribnica +386-1-8372-410

SI Ristro d.o.o.
Ribnica +386-1-8372-410

UK MOTOMAN Robotics UK Ltd
Banbury +44-1295-272755

Distributors

BG Kammarton Bulgaria Ltd
Sofia +359 (02) 926 6060

CZ Hadyna International spol. s.r.o.
Ostrava-Mariánské Hory +420 596 622 636

CZ SP-Tech s.r.o.
Nymburk +420 325 515 105

CH MESSER Eutectid Castolin Switzerland S.A.
Dällikon +41-44-847 17 17

GR Kouvalias Robotics
Avlona +30-22950 42902

HU Rehm Hegesztéstechnika Kft
Budapest +36-53-380 078

HU Flexman Robotics Kft.
Budapest +36-30-951 0065

IL KNT Robotics Ltd
Beit Shemesh +972-2-9905882

IL Uniweld Ltd
Yavne +972-8-9328080

NO Optimove as
Lierstranda +47-32240600

PL Rywal-RHC
Torun +48 56 66 93 800

RU Weber Comechanics
Moscow +7 495 105 88 87

TR Teknodrom Robotics & Automation INC
Gebze/Kocaeli +90 262 678 8818

ZA Robotic Systems SA PTY Ltd
Johannesburg +27-11-6083182

Headquarters

MOTOMAN Robotics Europe AB
Franska vägen 10, Kalmar
PO Box 4004 • SE-390 04 Kalmar, SWEDEN
Phone: +46 (0)480-417 800
Fax: +46-(0)480-417 999

Production unit

MOTOMAN Robotics Europe AB
Verkstadsгатan 2, Torsås
PO Box 504 • SE-385 25 Torsås, SWEDEN
Phone: +46 (0)480-417 800
Fax: +46-(0)486-414 10

www.motoman.eu



Technical data may be subject to change without previous notice · MOTOMAN Robotics Europe AB · Reg. No. Mrs6203EN-02 2008-05