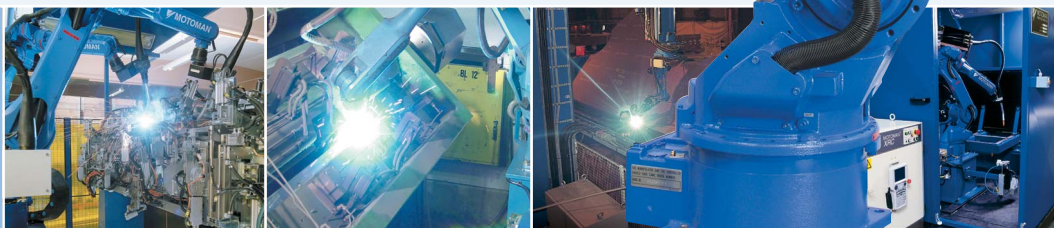


Arc welding robot
MOTOMAN-SSA2000



 **MOTOMAN**
A YASKAWA COMPANY

MOTOMAN-SSA2000

Integrated welding bundle

Benefits

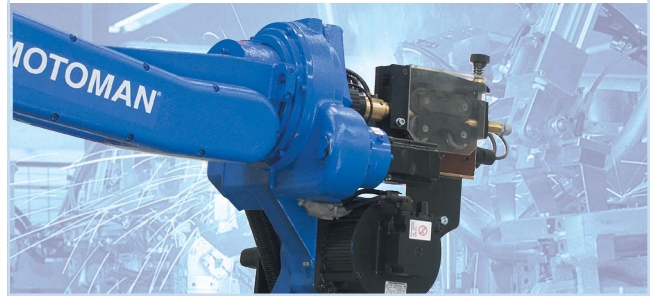
- ◆ Increased cable durability
- ◆ Interference with peripheral jigs reduced
- ◆ Offline programming simplified



Compact wire feeder mount

Benefits

- ◆ Space saving design – high density welding layout possible
- ◆ Wire feeding trouble reduced
- ◆ Robot performance enhanced



In-line torch mount

Benefits

- ◆ Accessibility improved in difficult welding situations
- ◆ Circumferential welding simplified



Application

Arc welding

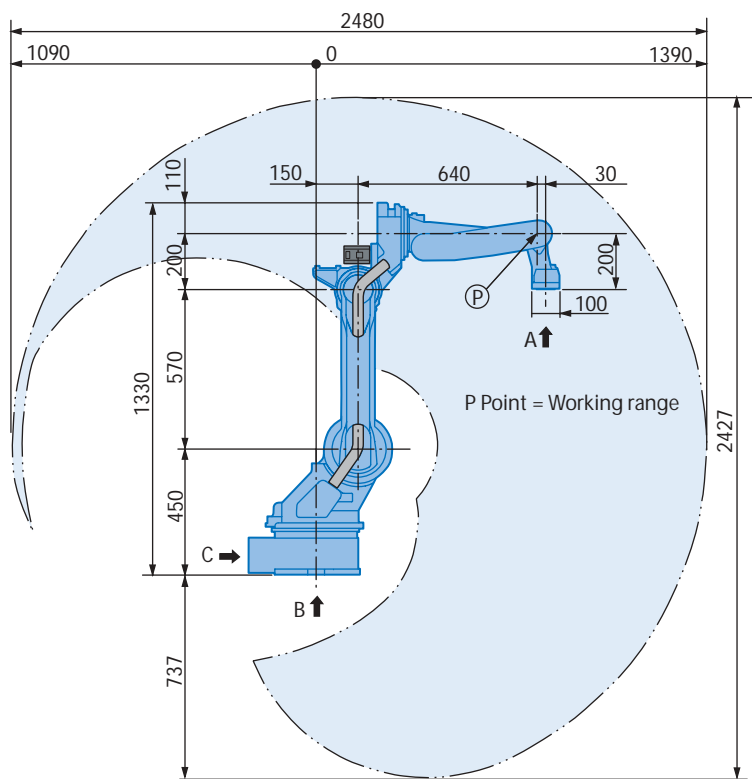


The SSA2000 dedicated arc welding robot

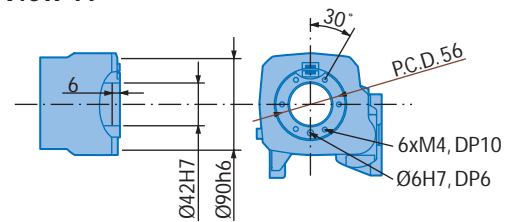
The MOTOMAN-SSA2000 is a robot dedicated for arc welding applications. The welding cable is integrated in the robot arm, which increases the cable durability and reduces potential interference with peripheral equipment. In addition, this feature also provides opportunities for production lines with high density layouts.

The welding torch is mounted in-line with the turning axis, which increases accessibility and improves performance when welding circumferentially. The position of the wire feeder combined with a short welding cable are important features for creating an overall compact build and trouble-free wire feeding.

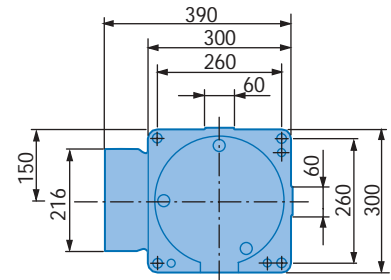
MOTOMAN-SSA2000



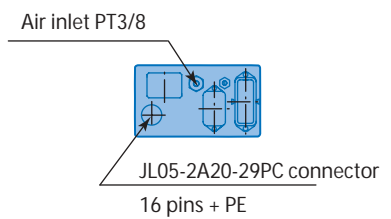
View A



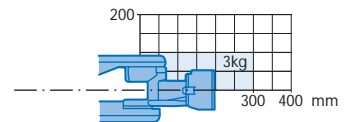
View B



View C

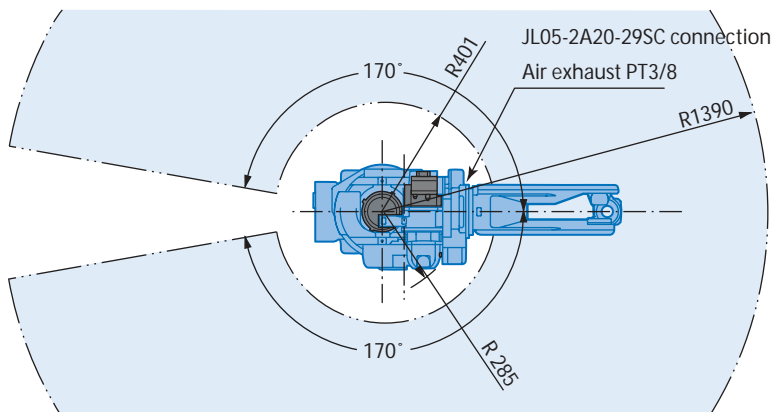


Maximum payload



Note

These dimensions are for reference only. Please request detail drawings for all design or engineering requirements.



Technical Specification for MOTOMAN-SSA2000

Robot type	Vertically articulated robot	Axis	Range of motion	Maximum speed
Controlled axis	6	S	±170°	210°/s
Payload	3 kg	L	+155°, -90°	190°/s
Repeatability	±0.08 mm	U	+190°, -175°	210°/s
Weight	130 kg	R	±150°	400°/s
Power requirements	1.5 kVA	B	+180°, -45°	400°/s
Mounting positions	Floor, wall and ceiling ¹⁾	T	±200°	600°/s

¹⁾ Ceiling mount available as an option

MOTOMAN offices and representatives near you

MOTOMAN Headquarters

SE MOTOMAN Robotics Europe AB
Kalmar +46-480-417800

DE MOTOMAN robotec GmbH
Allershausen +49-8166-90-0

MOTOMAN Company group

AT MOTOMAN robotec GmbH
Vienna +43-1-707 9324 15

CZ MOTOMAN robotec Czech s.r.o.
Prague +420-251-618430

DE MOTOMAN robotec GmbH
Frankfurt +49-6173-607730

DK MOTOMAN Robotics Europe AB
Løsning +45 7022 2477

ES MOTOMAN Robotics Iberica S.L.
Barcelona +34-93-6303478

FI MOTOMAN Robotics Finland Oy
Turku +358-40300600

FR MOTOMAN Robotics S.A.
Nantes +33-2-40131919

IT MOTOMAN Robotics Italia SRL
Modena +39-059-280496

NL MOTOMAN benelux B.V.
Breda +31-76-5302305

PT MOTOMAN Robotics Iberica S.L.
Aveiro +351-234-943 900

SE MOTOMAN Robotics Europe AB
Torsås +46-480-417800

SI MOTOMAN robotec d.o.o.
Ribnica +386-18372 50

SI Ristro d.o.o.
Ribnica +386-18372410

UK MOTOMAN Robotics UK Ltd
Banbury +44-1295-272755

Distributors

BG Kammarton Bulgaria Ltd
Sofia +359 (02) 926 6060

CZ Hadya International spol. s.r.o.
Ostrava-Marianske Hory +420 596 622 636

CZ SP-Tech s.r.o.
Nymburk +420 325 515 105

CH Messer Schweisstechnik AG
Dällikon +41-1-8471717

GR Kouvalias Robotics
Avlona +30-22950 42902

HU Rehm Hegesztéstechnika Kft
Budapest +36-30-9510065

IL KNT Robotics Ltd
Beit Shemesh +972-2-9905882

IL Uniweld Ltd
Yavne +972-8-9328080

NO Optimove as
Lierstranda +47-32240600

PL Rywal-RHC
Torun +48 56 66 93 800

RU Weber Comechanics
Moscow +7 495 105 88 87

TR Teknodrom Robotics & Automation INC
Gebze/Kocaeli +90 262 678 8820

ZA Robotic Systems SA PTY Ltd
Johannesburg +27-11-6083182

European Headquarters

MOTOMAN Robotics Europe AB
Box 4004 • SE-390 04 Kalmar, SWEDEN
Phone: +46 (0)480-417 800
Fax: +46-(0)480-417 999

Production unit

MOTOMAN Robotics Europe AB
Box 504 • SE-385 25 Torsås, SWEDEN
Phone: +46 (0)480-417 800
Fax: +46-(0)486-414 10

www.motoman.se



Technical data may be subject to change without previous notice - MOTOMAN Robotics Europe AB 2007 - Reg. No. Mrs6200EN.3.L