

Motoman offices and representatives near you

Motoman European headquarters

SE Motoman Robotics Europe AB
Kalmar +46-480-417800

Motoman company group

DE Motoman Robotec GmbH
Allershausen +49-8166-90-0
Motoman Robotec GmbH
Frankfurt +49-6173-6077-30

DK Motoman Robotics Europe AB
Tilst +45 7022 2477

ES Motoman Robotics Iberica S.L.
Barcelona +34-93-6303478

FI Motoman Robotics Finland Oy
Turku +358-40300600

FR Motoman Robotics S.A.
Nantes +33-2-40131919

GB Motoman Robotics UK Ltd
Banbury +44-1295-272755

IT Motoman Robotics Italia SRL
Modena +39-059-280496

PT Motoman Robotics Iberica S.L.
Aveiro +351-234-943 900

SI Ristro d.o.o.
Ribnica +386-61-861113

Distributors

CH Geiger Handling
Schwarzenburg +41-31-7343111

GR Kouvalias Industrial Robots
Kallithea +30-1-95892436

HU Rehm Hegesztéchnika Kft
Budapest +36-30-9510065

IL KNT Engineering Ltd
Kfar Azar +972-39231944

NO Robia ASA
Hokksund +47-32252820

PL Roboprojekt Boc Sp.z.o.o.
Siewierz +48-326728952

TR Teknodrom Robotik & Otomation Ltd.
Kartal-Istanbul +90 216 389 16 66

ZA Robotic Systems SA PTY Ltd
Johannesburg +27-11-6083182



General purpose robot
MOTOMAN-ES165N
MOTOMAN-ES165N-100
MOTOMAN-ES200N



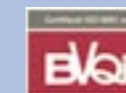
European Headquarters

Motoman Robotics Europe AB
Box 4004 • SE-390 04 Kalmar, SWEDEN
Phone: +46 (0)480-417 800
Fax: +46-(0)480-417 999

Production unit

Motoman Robotics Europe AB
Box 504 • SE-385 25 Torsås, SWEDEN
Phone: +46 (0)480-417 800
Fax: +46-(0)486-414 10

www.motoman.se



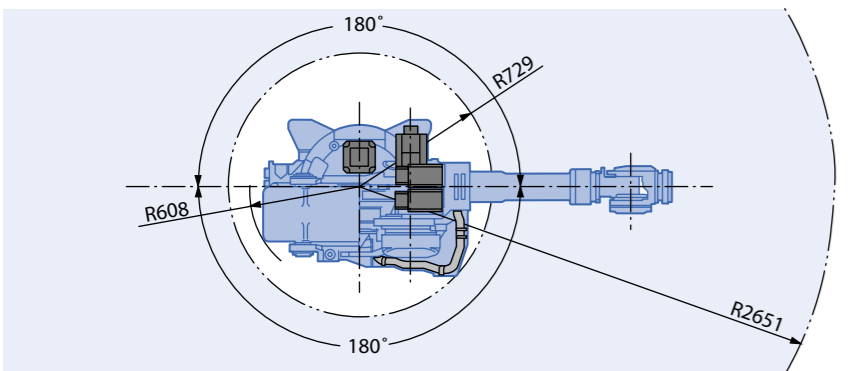
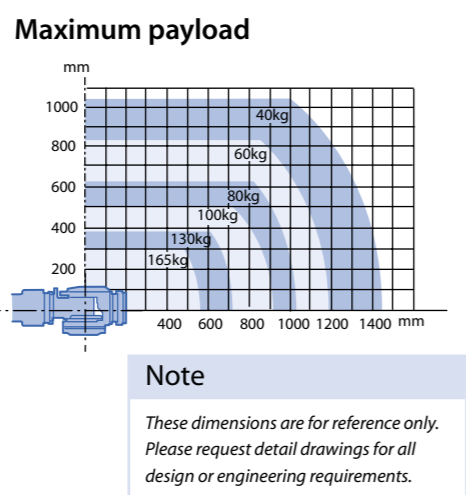
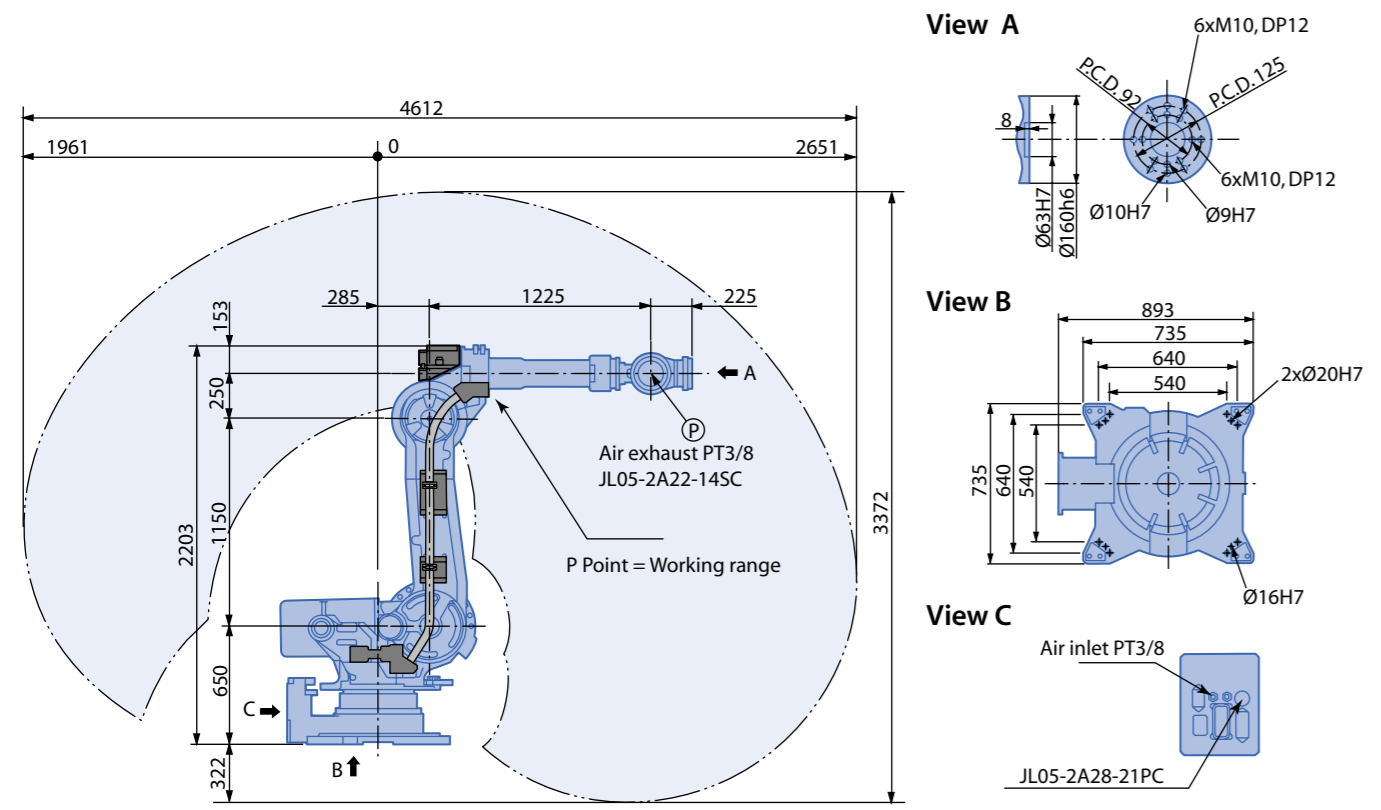
Technical data may be subject to change without previous notice - Motoman Robotics Europe AB 2005 - Reg. No. MR6210G.GB.0.L

 MOTOMAN®

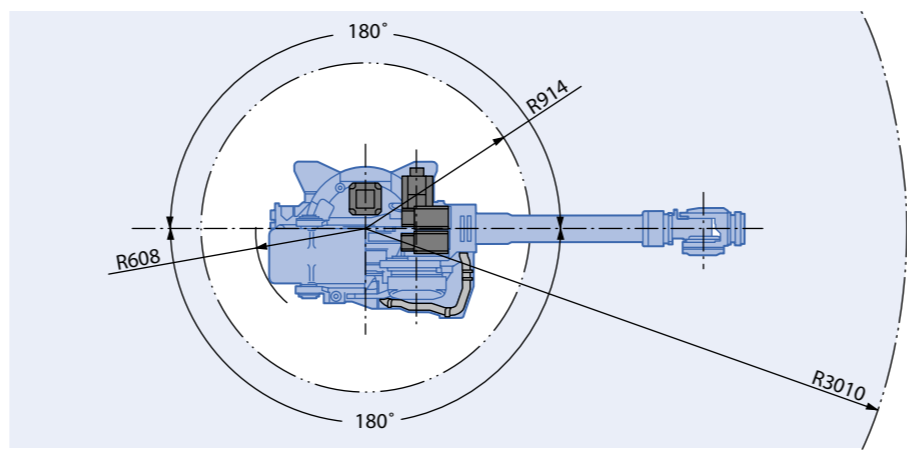
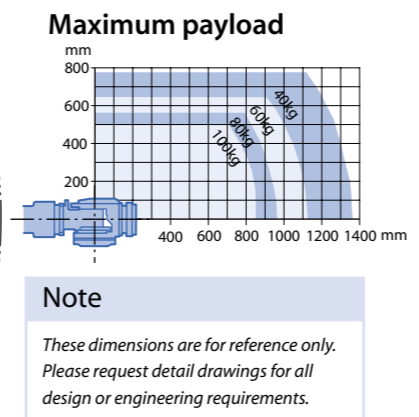
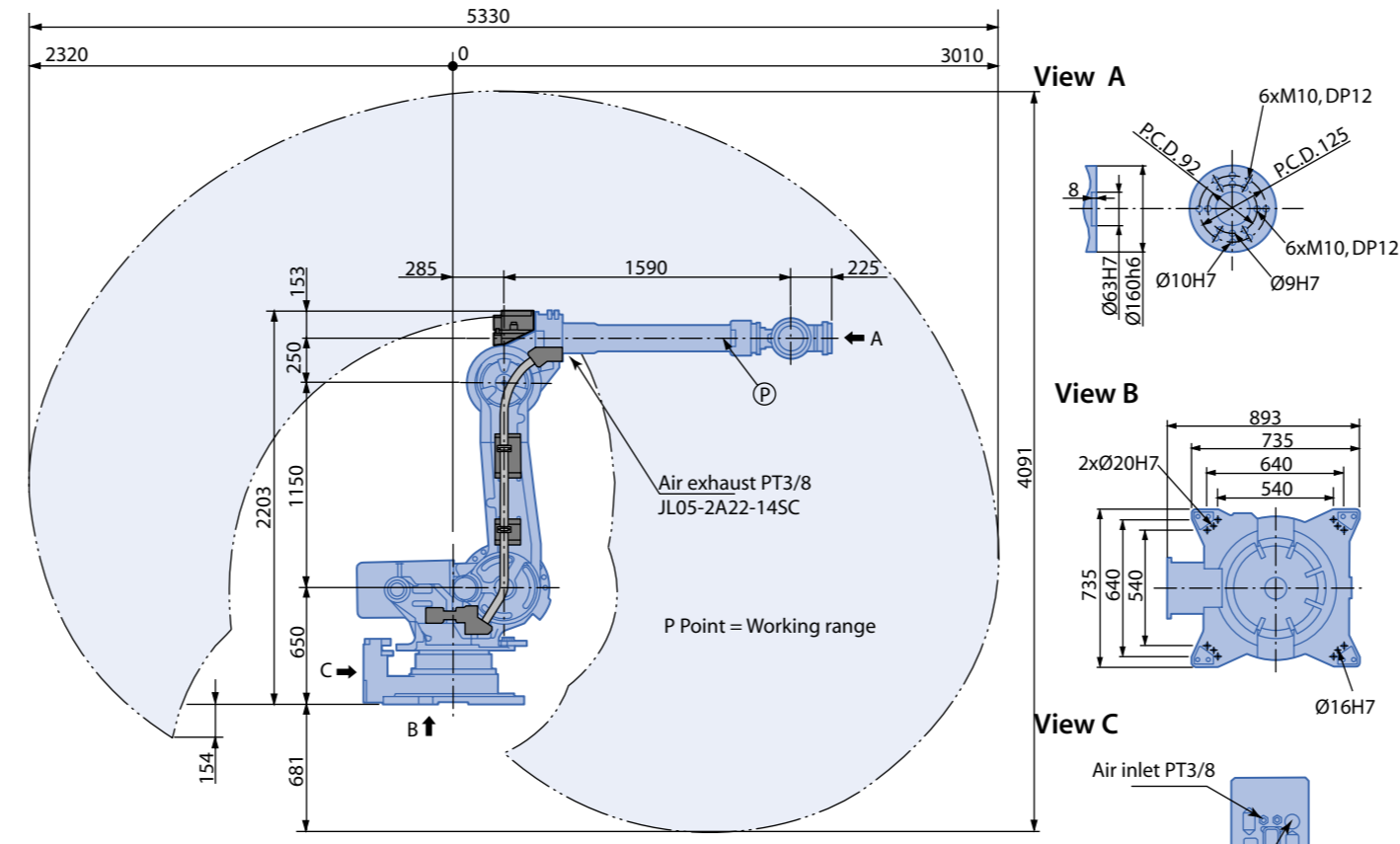
 MOTOMAN®

 MOTOMAN®

MOTOMAN-ES165N



MOTOMAN-ES165N-100

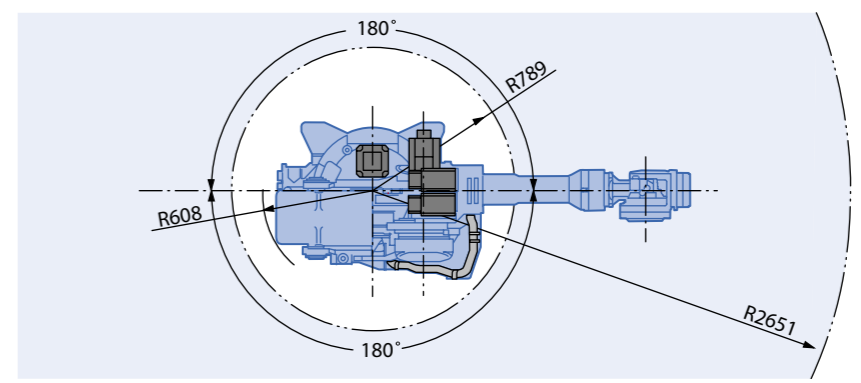
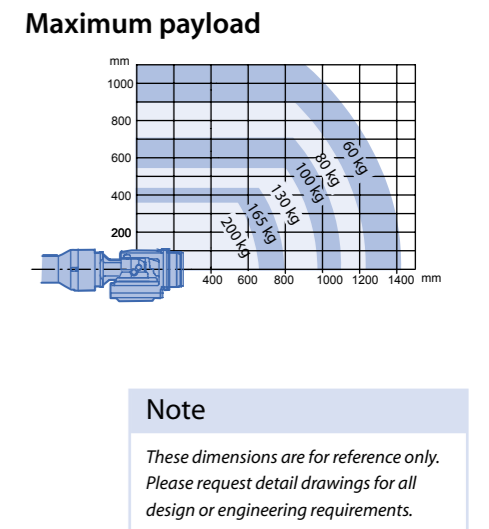
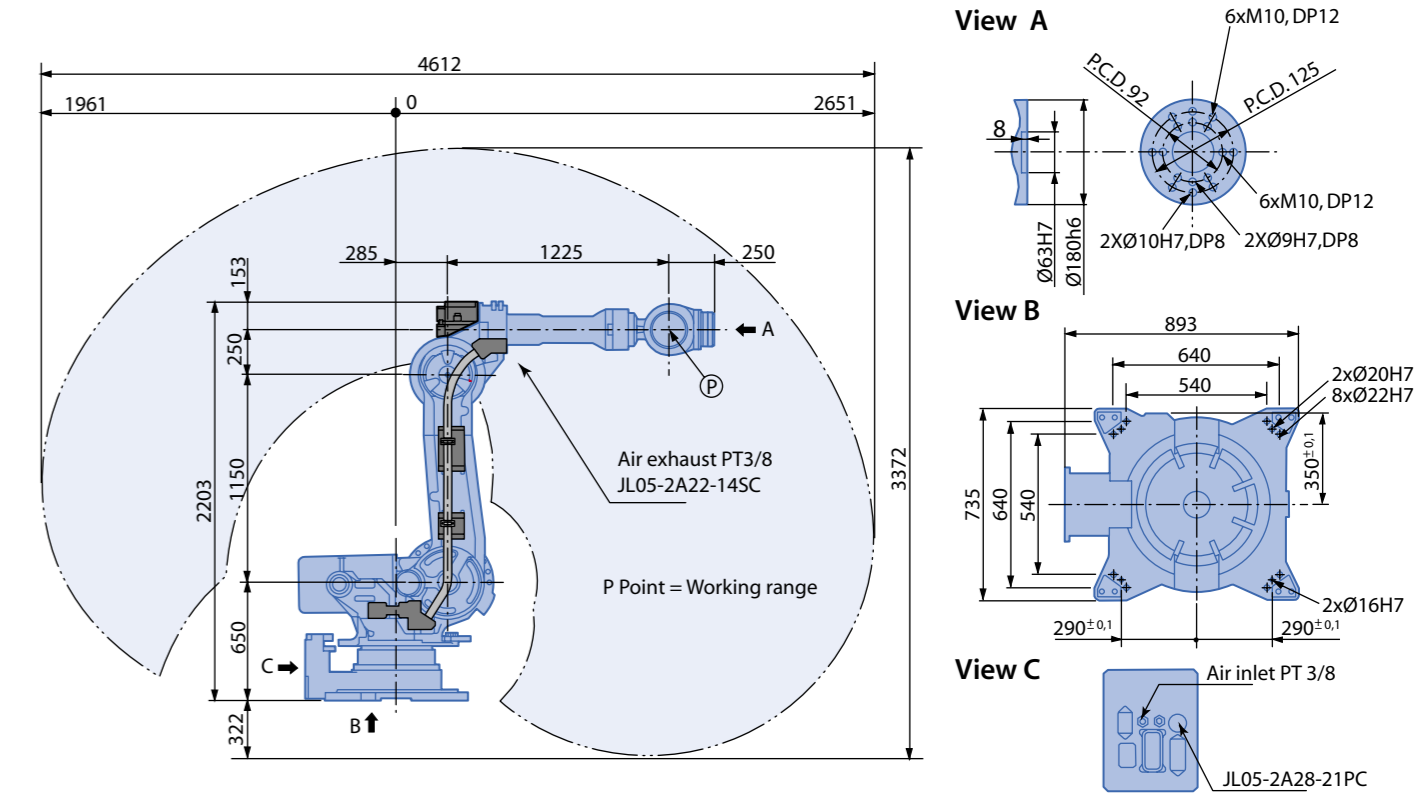


Technical Specification for MOTOMAN-ES165N-100

Controlled axis	6					
Payload	100 kg					
Repetability	±0.2 mm	Axis	Motion range	Maximum speed	Allowable moment	Allowable inertia
Weight	1120 kg	S	±180°	110°/s	-	-
Power requirements	7.5 kV	L	+76°, -60°	110°/s	-	-
Mounting positions	Floor	U	+230°, -142.5°	110°/s	-	-
Wrist unit protection class	IP67	R	±360°	175°/s	833 Nm	75 kg·m ²
Robot body protection class	N.C. ¹⁾ , (IP54 option)	B	±130°	145°/s	833 Nm	75 kg·m ²
Ambient conditions	0 to +45°C, 20-80% RH	T	±360°	240°/s	490 Nm	25 kg·m ²

¹⁾ Not classified for standard version.

MOTOMAN-ES200N



Technical Specification for MOTOMAN-ES200N

Controlled axis	6					
Payload	200 kg					
Repetability	±0.2 mm	Axis	Motion range	Maximum speed	Allowable moment	Allowable inertia
Weight	1230 kg	S	±180°	95°/s	-	-
Power requirements	7.5 kVA	L	+76°, -60°	85°/s	-	-
Mounting positions	Floor	U	+230°, -142.5°	95°/s	-	-
Wrist unit protection class	IP67	R	±360°	115°/s	1274 Nm	120 kg·m ²
Robot body protection class	N.C. ¹⁾ , (IP54 option)	B	±125°	110°/s	1274 Nm	120 kg·m ²
Ambient conditions	0 to +45°C, 20-80% RH	T	±360°	190°/s	686 Nm	70 kg·m ²

¹⁾ Not classified for standard version.

Technical Specification for MOTOMAN-ES165N

Controlled axis	6					
Payload	165 kg					
Repetability	±0.2 mm	Axis	Motion range	Maximum speed	Allowable moment	Allowable inertia
Weight	1100 kg	S	±180°	110°/s	-	-
Power requirements	7.5 kV	L	+76°, -60°	110°/s	-	-
Mounting positions	Floor	U	+230°, -142.5°	110°/s	-	-
Wrist unit protection class	IP67	R	±360°	175°/s	921 Nm	85 kg·m ²
Robot body protection class	N.C. ¹⁾ , (IP54 option)	B	±130°	145°/s	921 Nm	85 kg·m ²
Ambient conditions	0 to +45°C, 20-80% RH	T	±360°	240°/s	490 Nm	45 kg·m ²

¹⁾ Not classified for standard version.