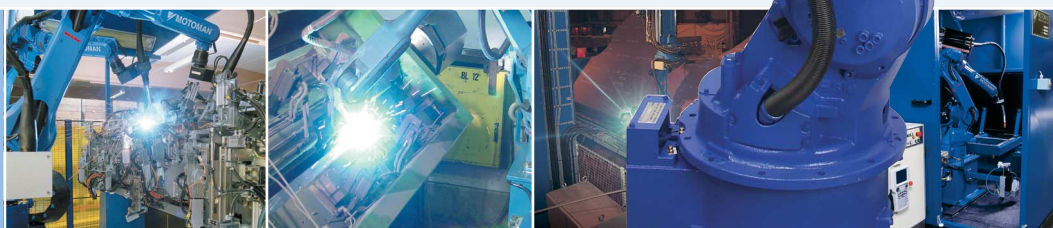


Arc welding robot
MOTOMAN-EA1900N



 MOTOMAN®

MOTOMAN-EA1900N

Integrated cable bundle

Benefits

- ◆ Increased cable durability
- ◆ Interference with peripheral jigs reduced
- ◆ Offline programming simplified



Compact wire feeder mount

Benefits

- ◆ Space saving design – high density welding layout possible
- ◆ Wire feeding trouble reduced
- ◆ Robot performance enhanced



In-line torch mount

Benefits

- ◆ Accessibility improved in difficult welding situations
- ◆ Circumferential welding simplified



Application

Arc welding



Arc welding equipment, welding cables etc. must be ordered separately.

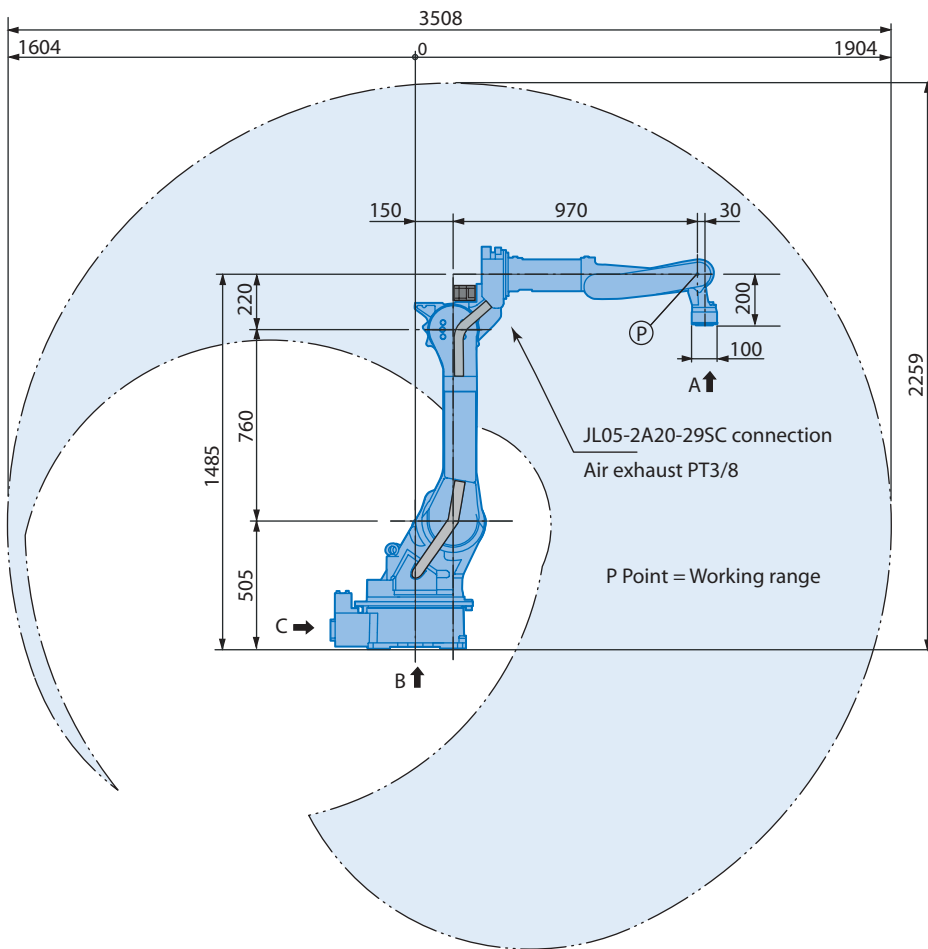
The EA1900N dedicated arc welding robot

The MOTOMAN-EA1900N is a robot dedicated for arc welding applications. The welding cable is integrated in the robot arm, which increases the cable durability and reduces potential interference with peripheral equipment. In addition, this feature also provides opportunities for production lines with high density layouts.

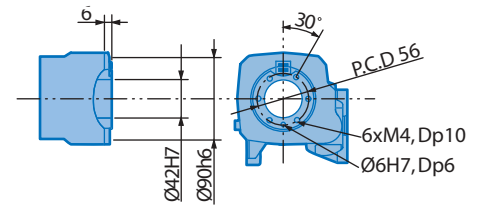
The welding torch is mounted in-line with the turning axis, which increases accessibility and improves performance when welding circumferentially. The position of the wire feeder combined with a short welding cable are important features for creating an overall compact build and trouble-free wire feeding.



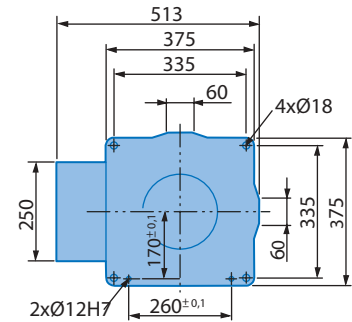
MOTOMAN-EA1900N



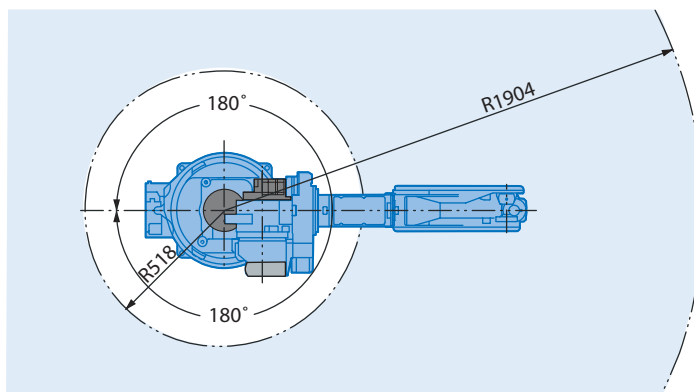
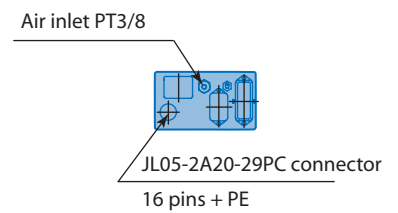
View A



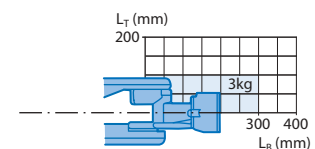
View B



View C



Maximum payload



Note

*These dimensions are for reference only.
Please request detail drawings for all design
or engineering requirements.*

Technical Specification for MOTOMAN-EA1900N

Robot type	Vertically articulated robot	Axis	S	Range of motion	±180°	Maximum speed	170°/s
Controlled axis	6	L		+155°, -110°		170°/s	
Payload	3 kg	U		+255°, -165°		175°/s	
Repeatability	±0.08 mm	R		±150°		340°/s	
Weight	280 kg	B		+180°, -45°		340°/s	
Power requirements	2.8 kVA	T		±200°		520°/s	
Mounting positions	Floor, wall and ceiling ¹⁾						

¹⁾ Ceiling mount available as an option

Motoman offices and representatives near you

Motoman European headquarters

SE Motoman Robotics Europe AB
Kalmar +46-480-417800

Motoman company group

DE Motoman Robotec GmbH
Allershausen +49-8166-90-0
Motoman Robotec GmbH
Frankfurt +49-6173-6077-30

DK Motoman Robotics Europe AB
Tilst +45 7022 2477

ES Motoman Robotics Iberica S.L.
Barcelona +34-93-6303478

FI Motoman Robotics Finland Oy
Turku +358-40300600

FR Motoman Robotics S.A.
Nantes +33-2-40131919

GB Motoman Robotics UK Ltd
Banbury +44-1295-272755

IT Motoman Robotics Italia SRL
Modena +39-059-280496

PT Motoman Robotics Iberica S.L.
Aveiro +351-234-943 900

SI Ristro d.o.o.
Ribnica +386-61-861113

Distributors

CH Messer SAG
Dällikon +41-18-471717

GR Kouvalias Industrial Robots
Kallithea +30-1-95892436

HU Rehm Hegesztéstechnika Kft
Budapest +36-30-9510065

IL KNT Engineering Ltd
Kfar Azar +972-39231944

NO Robia ASA
Hokksund +47-32252820

PL Roboprojekt Boc Sp.z.o.o.
Siewierz +48-326728952

TR Teknodrom Robotik Otomasyon Ltd.
Gebze, Kocaeli +0090-2626443444

ZA Robotic Systems SA PTY Ltd
Johannesburg +27-11-608318



European Headquarters

Motoman Robotics Europe AB
Franska vägen 10, Kalmar
Box 4004 • SE-390 04 Kalmar, SWEDEN
Phone: +46 (0)480-417 800
Fax: +46-(0)480-417 999

Production unit

Motoman Robotics Europe AB
Verkstadsgatan 2, Torsås
Box 504 • SE-385 25 Torsås, SWEDEN
Phone: +46 (0)480-417 800
Fax: +46-(0)486-414 10

www.motoman.se



Technical data may be subject to change without previous notice · Motoman Robotics Europe AB 2005 · Reg.No. MRS6201GB.0.L

